



CONNECT WITH US    @thai ex anuga asia

VISITOR'S *guide* BEYOND FOOD EXPERIENCE



TRADE:
26-29 MAY
10.00-18.00 hrs

TRADE & PUBLIC:
30 MAY
10.00-18.00 hrs

JOINTLY ORGANISED BY



PARTNER REGION



EVENT INFORMATION AT YOUR FINGERTIPS

Download Mobile App to
Access Exhibitor List, Products, Agenda & Map



Activities You Don't Want to Miss at Hall 4:



future
FOOD EXPERIENCE+



View sessions



Food tasting at
TASTE THE FUTURE



Secure your seat

Guided tour at
THAIFEX-ANUGA
TREND ZONE



Secure your slot



Alternative Protein Taste &
Flavour Challenge

27 May 2026
11:00 AM – 12:30 PM

Taste The Future, Hall 4

Southeast Asia's First Private Label Platform

For Retailers • Manufacturers • Decision-makers

PLX ASIA
PRIVATE LABEL EXPO

Speak to us at
PLX ASIA SHOWCASE

 26 - 29 MAY 2026

 HALL 5 FOYER

AT A GLANCE

 **250+**

Food & Non-Food Exhibitors

 **5,000+**

Trade Visitors Across Asia

WHO YOU WILL MEET

Retail & Buyers

- Supermarkets
- Convenience
- E-Commerce
- Distribution Groups

Decision Makers

- Category Heads
- Private Label Directors
- Procurement Leaders

Full Scale Exhibition



**8 & 9 Sep
2027**



**IMPACT,
Bangkok**

ORGANISERS & OFFICIAL PARTNERS



OFFICIAL ASSOCIATION



OFFICIAL KNOWLEDGE PARTNER



Scan For Interest

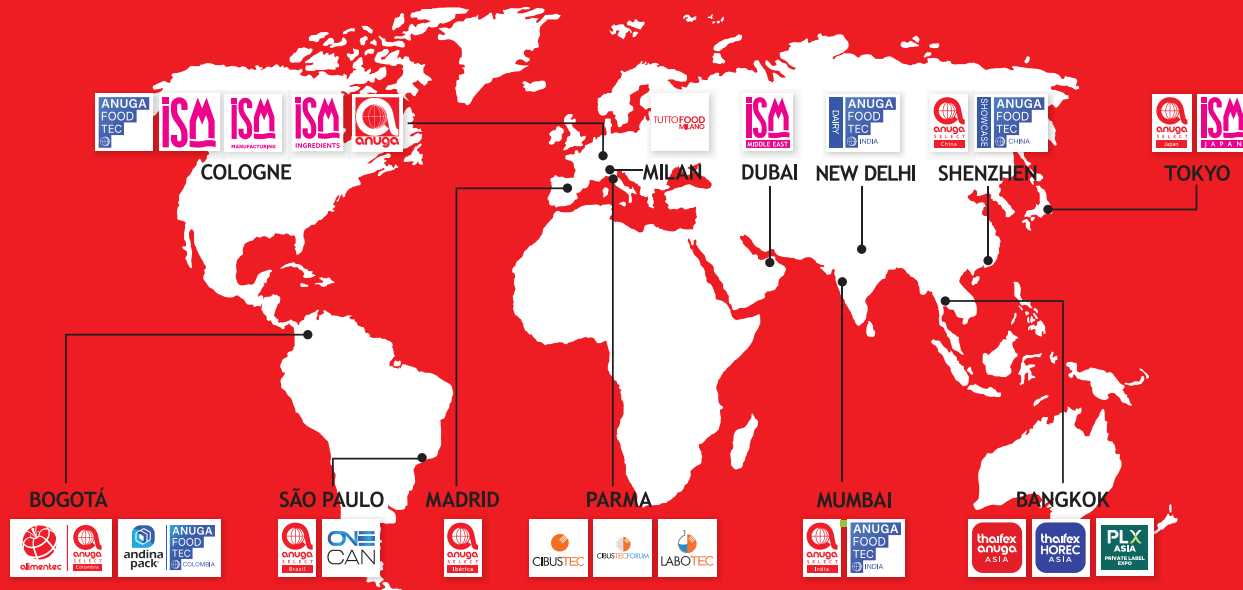
STRATEGIC RETAIL PARTNERS



www.plxasia.com

info@plxasia.com

ALL TASTES. ONE UNIVERSE.



For More Information

FOOD EVENTS



FOODTEC EVENTS





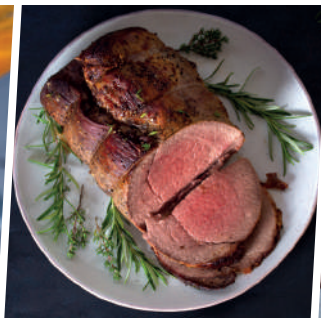
Visit the European Union Pavilion

26-30 MAY 📍 Booth 5-E01



ขอเชิญเยี่ยมชมพาวิลเลียนสหภาพยุโรป

26-30 พฤษภาคม 📍 บูธหมายเลข 5-E01



ENJOY
IT'S FROM
EUROPE



EUROPEAN UNION

2 SHOWS, 2 INDUSTRIES 2 STRATEGIC DATES

Defining Asia's HORECA and F&B Future



SHAPING THE FUTURE OF HORECA
2-5 MARCH 2027

www.thaifex-horec.asia

BEYOND **FOOD** EXPERIENCE
25-29 MAY 2027

www.thaifex-anuga.com



SPEAK TO US @ **HALL 2 FOYER**
Secure Your Space for 2027

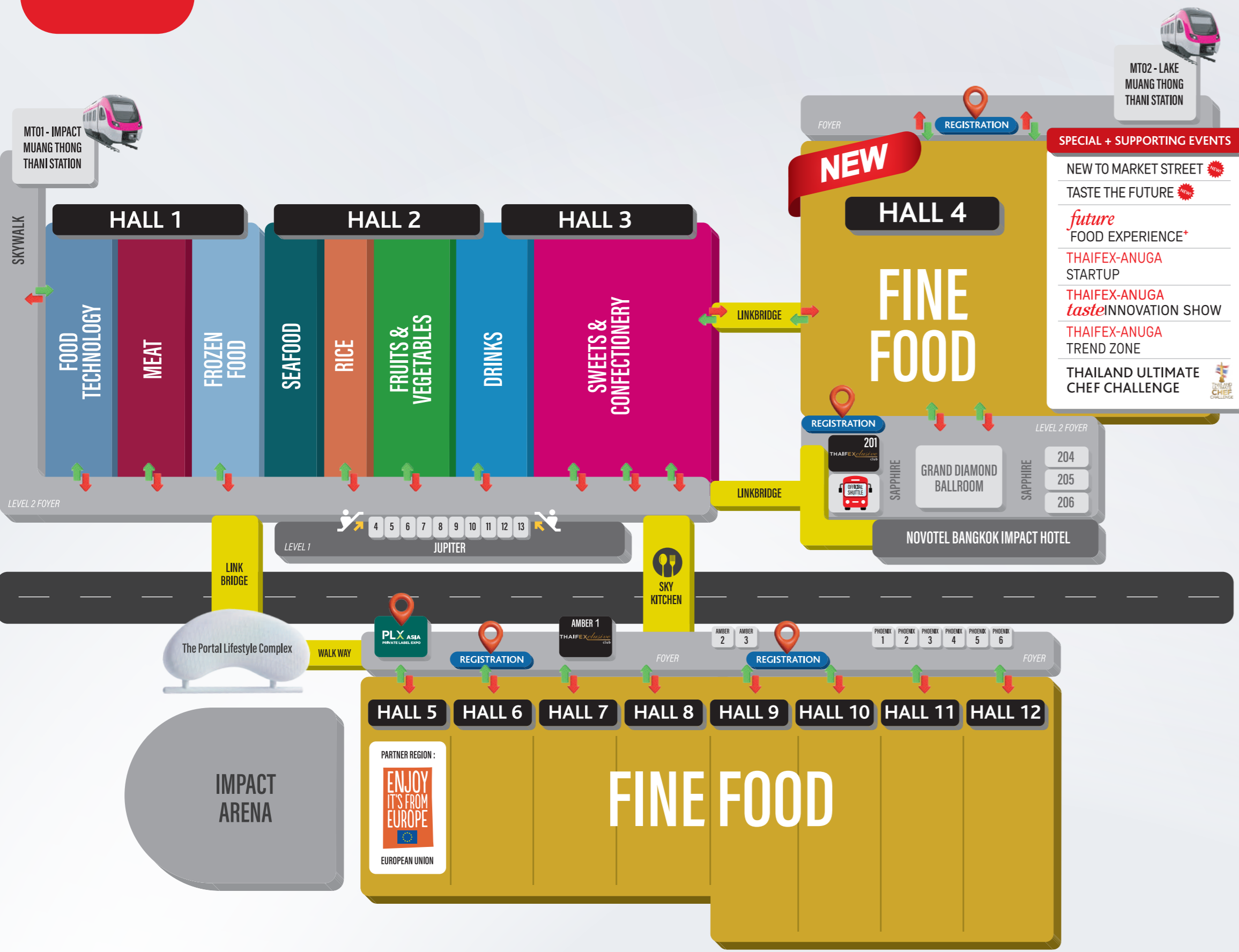
JOINTLY ORGANISED BY





PRODUCT HIGHLIGHTS FROM HALL 4

Scan to explore new launches and featured food and beverage products from Hall 4 exhibitors



COUNTRY/PROVINCIAL PAVILIONS

- HALL 1 :** Australia | Belgium | China | Norway | Republic of Korea | Taiwan Food & Pharmaceutical Machinery Manufacturers' Association | Taiwan Frozen Food Processors Association
- HALL 2 :** Chile | China | Norway | Republic of Korea | Singapore | United States of America | Vietnam | Taiwan Beverage Industries Association | Taiwan Confectionery, Biscuit & Floury Food Industry Association | Taiwan Frozen Food Processors Association
- HALL 3 :** China | Republic of Korea | Singapore | Türkiye | Taiwan Beverage Industries Association | Taiwan Cannery Association | Taiwan Confectionery, Biscuit & Floury Food Industry Association | Taiwan Regional Association Of Preserved Fruits
- HALL 4 :** Argentina | China | India | Italy | Japan | Lithuania | Malaysia | Poland | Republic of Korea | Saudi Arabia | Singapore | Slovakia | Uzbekistan
- HALL 5 :** China | European Union | France | Germany | India | Philippines | Republic of Korea | Spain | Sri Lanka | Vietnam
- HALL 6 :** Brazil | Canada | China | Poland | United States of America | Vietnam | Food Distribution Association of Taipei City | Taiwan Cannery Association | Taiwan Confectionery, Biscuit & Floury Food Industry Association | Taiwan Fermenting Food Industry Association | Taiwan Regional Association Of Preserved Fruits | Yunlin County Government
- HALL 7 :** Indonesia | Malaysia | Netherlands | Republic of Korea | Türkiye | Vietnam
- HALL 8 :** Australia | China | Italy | Japan | Malaysia | Peru | Republic of Korea | Singapore | United Kingdom
- HALL 9 :** China
- HALL 10 :** Macau SAR
- HALL 12 :** China | Malaysia | Vietnam

HALAL & ORGANIC SHOWCASES

HALAL SHOWCASE Foyer of Hall 2
ORGANIC SHOWCASE Foyer of Hall 2

FACILITIES/SERVICES

- REGISTRATION** VISITOR REGISTRATION & BADGE COUNTER
Outside Hall 4, Hall 6, Hall 9/10
- THAIFEX exclusive CLUB** IMPACT Forum, **Sapphire 201**
Foyer of IMPACT Exhibition Centre, **Amber 1**
- LUGGAGE FACILITIES** Foyer of Hall 2/7

ACCESSIBILITY

- OFFICIAL SHUTTLE BUS**
IMPACT Forum (Holding Area: Sapphire 202/203)
- MRT PINK LINE**
MT01 Impact Muang Thong Thani Station - near Hall 1
MT02 Lake Muang Thong Thani Station - near Hall 4
- TAXI/VAN TO:**
Downtown Outside Challenger 2, Level 1 **Si Rat Station, Chatuchak, Ngamwongwan & Sanamluang**
Outside Challenger 3 - Food Atrium
- MOTORCYCLE TAXI**
In front of Krungsri Bank, Level 1

SALES BOOTH

- thai anuga ASIA SALES BOOTH** Foyer of Hall 2, beside Entrance 2
- thai anuga HOREC ASIA SALES BOOTH** Foyer of Hall 2, opposite Entrance 1

PLX ASIA SHOWCASE

PLX ASIA PRIVATE LABEL SHOW PLX Asia Showcase Foyer of Hall 5